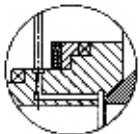


FULLY WELDED, METAL SEATED**Features**

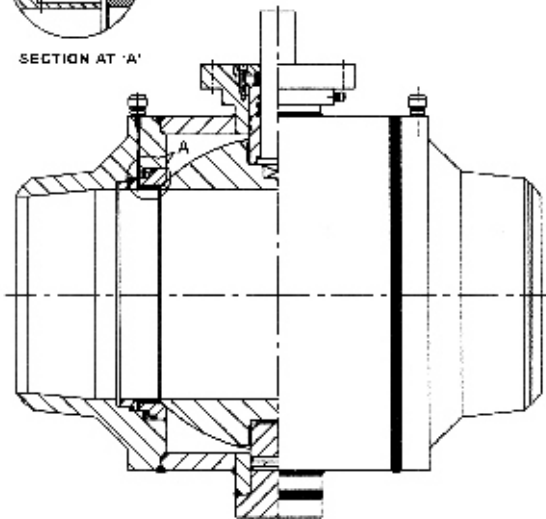
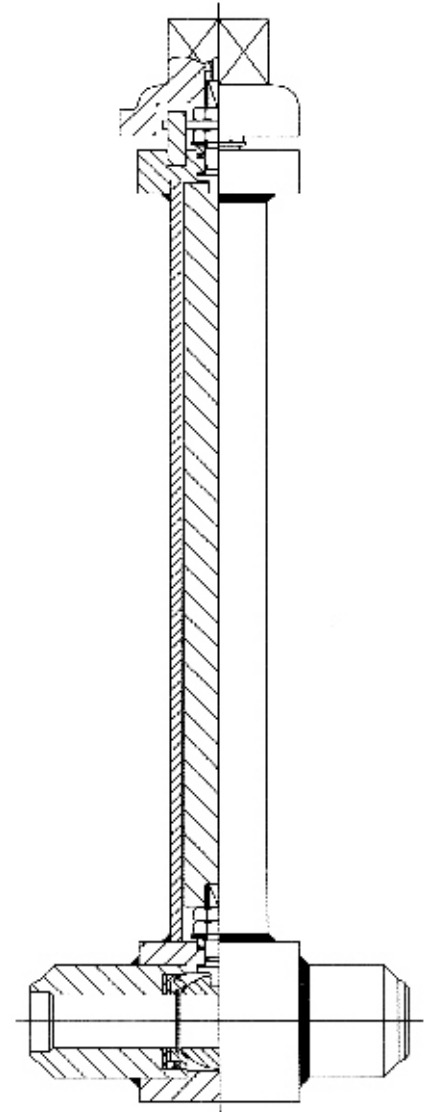
- ◆ Hawa Fully Welded Metal Seated Ball Valves have been designed to meet the requirements BS 5351/ASME B 16.34/API 6D-ISO 14313/API 608/MSS SP 72 and suitable for gas pipeline application.
- ◆ Face to Face and End to End dimensions conform to ASME B 16.10 / ISO 5752 / BS 2080 /API 6D-ISO 14313/ DIN
- ◆ End flange dimensions conform to ASME B 16.5 / ISO 7005-1 / API 605 / BS 3293 / DIN
- ◆ Butt weld end dimensions conform to ASME B 16.25
- ◆ Metal seated seats
- ◆ Extended stems for buried applications
- ◆ Fire safe design
- ◆ Pressure energized seat rings with spring assistance for preloading ensure leak tightness even at low pressure
- ◆ Blow out proof stem construction
- ◆ Double block and bleed
- ◆ Antistatic devices ensure electrical continuity between ball, stem & body
- ◆ Bearing pads fix the ball and absorb total thrust of the medium relieving the downstream sealing of the load
- ◆ ISO 5211 top pad for simplified gear/actuator mounting
- ◆ Valves meet the requirements of fugitive emission levels Shell category B as per MESC SPE 77/312

Options

- ◆ Stem Extension
- ◆ For low temperature and cryogenic services (cold box and non-cold box applications) extended bonnet as per BS 6364 available
- ◆ Locking arrangement
- ◆ Gear, Electrical, Hydraulic or Pneumatic actuator available
- ◆ Emergency sealant injection system



SECTION AT 'A'

**TRUNNION MOUNTED****FLOATING BALL**

* Compliant to NACE MR-0175 (2002)